

Bass Coast Develops Innovative Solutions to Complex Problems



Emerging Challenges of Climate Change for Bass Coast

The Problem



Sea Level Rise



Loss of Foreshores



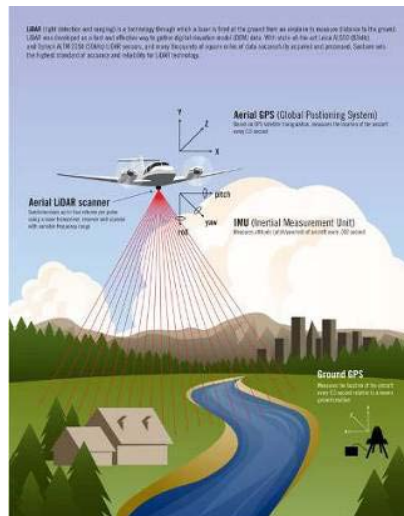
Storm Surges



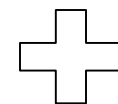
Extreme Weather



The Solution



LiDAR Elevation Data



RapidMap's proven methodology and built-in QC ensured that the data was of the highest quality.

They deployed highly experienced technicians to collect the details of all pipes and pits adhering to D-Spec specifications.

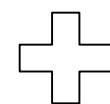
Rapidmap brought a wealth of experience and commitment to the table when we invited them to field audit our Drainage Data.



Bass Coast's decision to work with A-Spec was driven by its open data schema, in that it does not specify any one software or system, but focused on getting the right data to enable strong asset management.

A-Spec has been designed with strong industry involvement, and is already the accepted data interface between the development industry and Local Government.

Reliable Drainage Data



Bass Coast spatial analysts have created in-house tools to process and model the complex LiDAR elevation data, to extract high accuracy natural surface models, and to extract buildings and vegetation as well as Sea Level Rise scenarios.

Council is also working in partnership with RMIT University to extract highly accurate overland flow paths associated with Council Drainage, to mitigate the risk associated with flooding from intense storm activity.

Bass Coast Shire is at the leading edge in their use of this new technology (LiDAR) and continue to develop innovative solutions for Strategic Planners and to address emerging issues associated with Climate Change as well as Carbon Pricing and Carbon Offsets.



Bass Coast Innovation



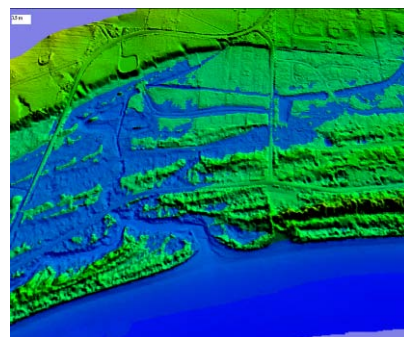
Solution combines Surveying, Geography, Engineering, Hydrology, and Spatial Sciences



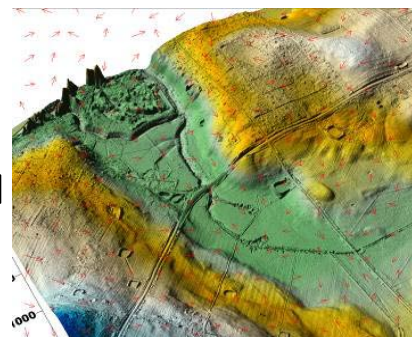
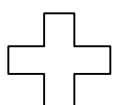
Highly Refined Surface/Water Model

“Bass Coast Shire is achieving considerable savings from the cost effective solutions they are developing, with benefits flowing to their communities.”

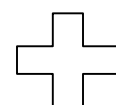
The Results



Sea Level Rise Scenarios



Overland Flow Paths



Vegetation Mapping



2011 Asia-Pacific Spatial Excellence Award

Land Titling and Development



SIBA Director, John Keays (R) presents the award to Vic SIBA chair, George Havakis, on behalf of the winners Bass Coast Shire Council and Rapidmap